

# PURE-Liner

The HVAC protection solution

PUREAIR  
CONTROL SERVICES, INC.

## Case Study Dr. Phillips Center for the Performing Arts

### City of Orlando protects new Performing Arts Center HVAC system with PURE-Liner.

#### Project Insight

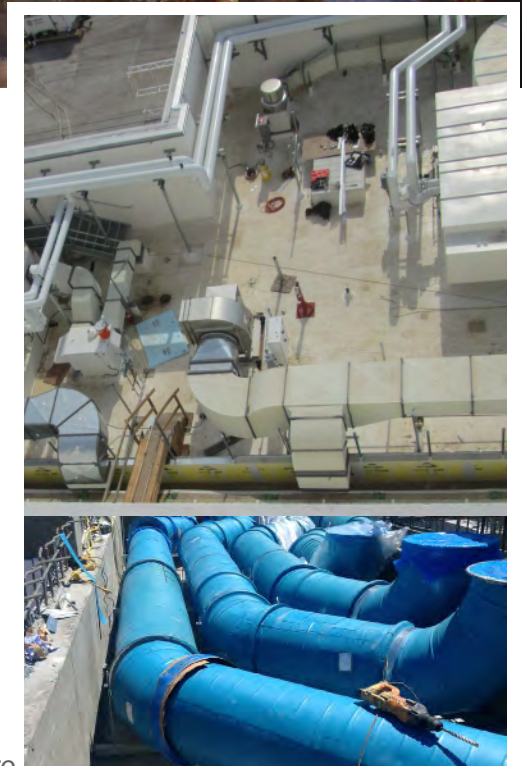
The Dr. Phillips Center for the Performing Arts is housed on a nine-acre site, the completed project to include: two performance theaters, a community theater, outdoor plaza and performance space, rehearsal rooms, administrative offices, educational programming space and a community facility. The building itself is approximately 330,000 gross square feet. Along with the performing arts center and its education and entertainment venues, the two-block site also accommodates new restaurants.

#### Concern

The City of Orlando, the mechanical contractor and the general contractor were concerned about protecting the underground and rooftop ductwork from moisture elements and premature rusting.

#### Solution

At the Dr. Phillips Center for the Performing Arts approximately 85,000sq ft of PURE-Liner sheet membrane was installed on the ductwork to weatherproof the sheet metal ductwork from the outside elements. They chose to install PURE-Liner; a specialty produced sheet membrane system incorporating unique resins and antimicrobial technologies to provide a drain pan, AHU and ductwork protection for weatherproofing.



PUREAIR  
CONTROL SERVICES, INC.

PURE-Liner

BRS  
BUILDING REMEDIATION SCIENCES

a GREENGUARD<sup>®</sup> product

# DUCT WORK LINER EXAMPLES

Examples of PURE-Liner installed in various locations and applications on the Performing Arts roof top.



Roof Top PURE-Liner White



DUCT Work Underground - PURE-Liner Blue



Roof Top PURE-Liner White



DUCT Work - PURE-Liner Blue



PURE-Liner is ideal for HVAC use in schools, office buildings, hospitals and other buildings where the growth of mold, mildew, bacteria, and algae must be minimized. PURE-Liner has a very low water vapor transmission rate to prevent the ingress of moisture, is a 40-mil Mold Control System that is surface adhered directly to HVAC ductwork and drain pans.